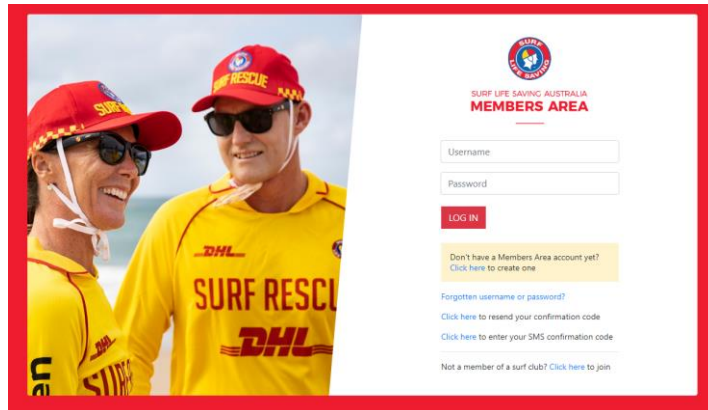


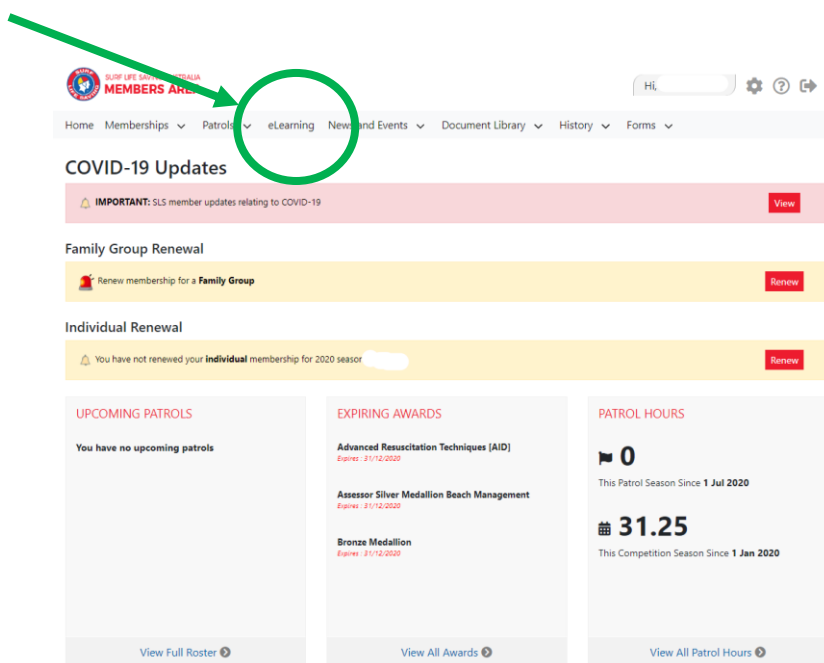
SLSA MEMBERS AREA – HOW TO GUIDE

Locating Junior course resources (for completion by member)

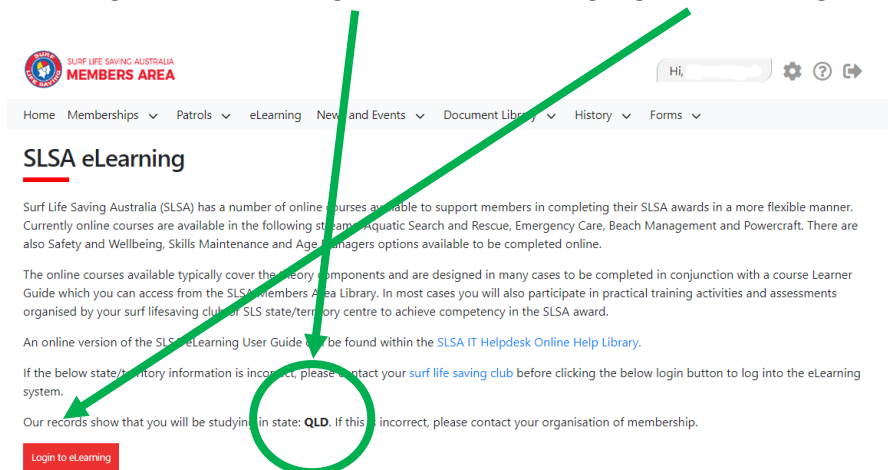
1. Log into the SLSA Members Area (members.sls.com.au)



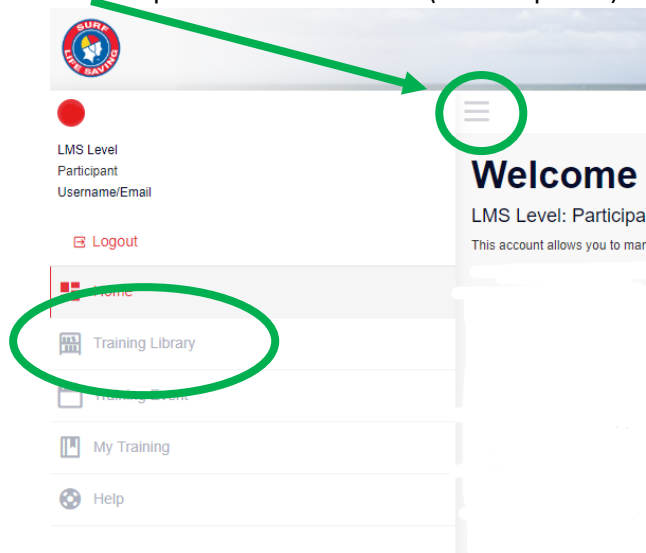
2. Select **eLearning**



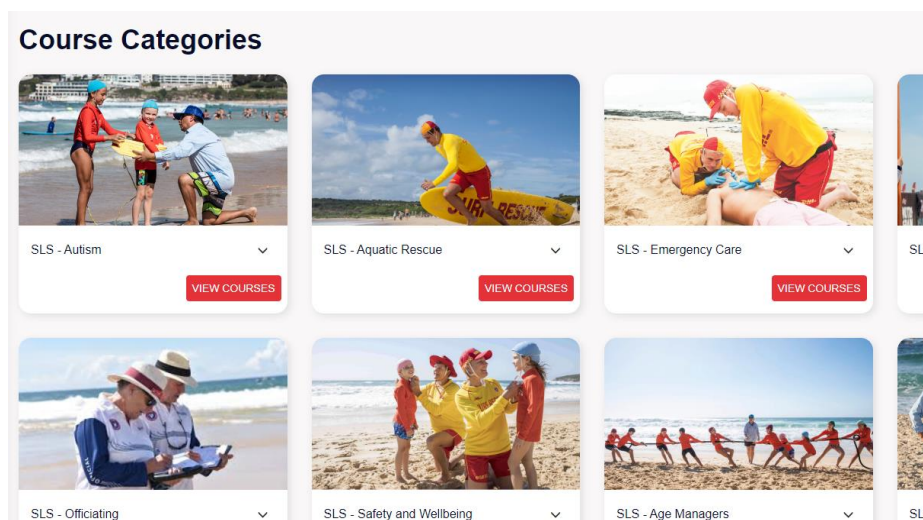
3. Check that you are registered for training QLD before selecting **Login to eLearning**



4. Select **Training Library** from the Menu on the left (automatically appears when using a computer/laptop). If Menu does not appear click [here](#) to open on another device (ie smartphone).



5. Select **View Courses** under the appropriate Course Category



- (a) Select **SLS – Age Managers** for **SLS – Age Managers** and **Inclusive Beaches – An Introduction**
(b) Select **SLS – Safety and Wellbeing** for **SLS – Safeguarding Children and Young People Awareness Course** and **SLS – Safer Surf Clubs**
(c) Select **SLS – Autism** for **Inclusive Beaches – An Introduction**

NOTE – Members will have access to several courses each Category. However, some courses are for information purposes only and may not be in use in Queensland.